

PRODUCT INFORMATION PACKET

Model No: 5KH36KN114

Catalog No: H169

1/6-1/18 HP 2 speed Fan and Blower HVAC/R Motor, 1 phase, 1725/1140 RPM, 115 V, 48Z Frame, ODP
Self Cooled Motors



Regal and Marathon are trademarks of Regal Beloit Corporation or one of its affiliated companies.
©2020 Regal Beloit Corporation, All Rights Reserved. MC017097E

REGAL

Nameplate Specifications

Output HP	1/6-1/18 Hp	Output KW	0.13 kW
Frequency	60 Hz	Voltage	115 V
Current	3.4,1.9 A	Speed	1725/1140 rpm
Service Factor	1.35	Phase	1
Efficiency	50.5 %	Power Factor	0
Duty	Continuous	Insulation Class	B
KVA Code	R	Frame	48Z
Enclosure	Drip Proof	Thermal Protection	N/R
Ambient Temperature	40 °C	Drive End Bearing Size	6203
Opp Drive End Bearing Size	6203	UL	Recognized
CSA	Yes	CE	N

Technical Specifications

Electrical Type	Split Phase	Starting Method	SM
Poles	4	Rotation	Clockwise/Counterclockwise
Mounting	Resilient Base	Motor Orientation	ANY
Drive End Bearing	BALL	Opp Drive End Bearing	Ball
Frame Material	Rolled Steel	Overall Length	10.38 in
Frame Length	6.22 in	Shaft Diameter	0.500 in
Shaft Extension	1.88 in	Thru-bolts Extension	0 in
Outline Drawing	52A101908P5	Connection Drawing	52A106478AA

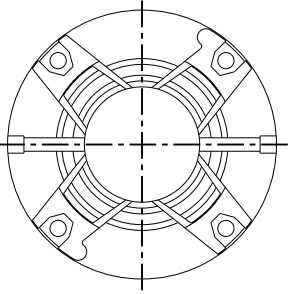
This is an uncontrolled document once printed or downloaded and is subject to change without notice. Date Created:03/11/2020

THIRD ANGLE PROJECTION

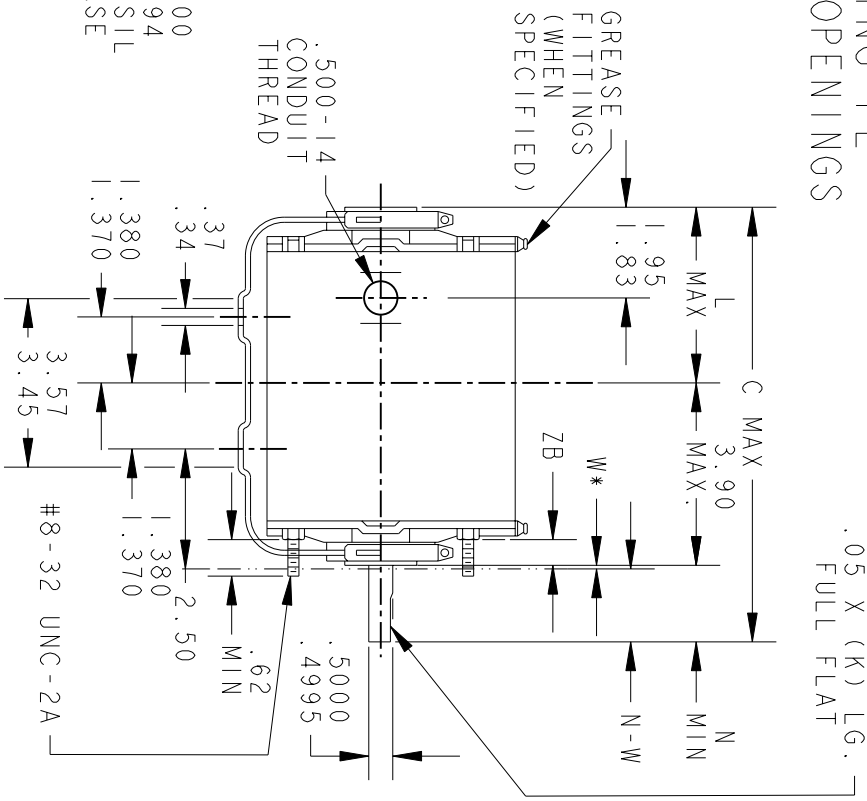
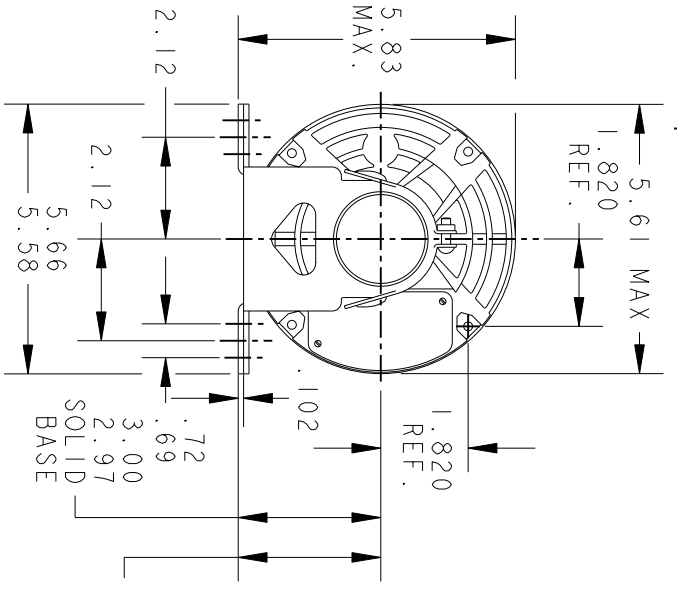


REVISIONS

REV.	DESCRIPTION	DATE	APPROVED
8	CHG TO RBC FORMAT PER IS 05-1777	12/15/05	RAJKUMAR



VIEW SHOWING PE VENTILATION OPENINGS



*W IS A CLEARANCE DUE TO VARIATION IN PARTS & ASSEMBLY.

PT	TYPE	GE SIZE	NEMA FR	C	K	L	N	N-W	ZB
6	KH	37	48Z	10.78	1.54	5.05	1.88	2.01/1.79	.55/.52
5	KH	36	48Z	10.38	1.54	4.65	1.88	2.01/1.79	.55/.52
4	KH	33	48Z	9.94	1.91	3.84	2.25	2.38/2.16	.55/.52
3	KH	35	48Z	9.95	1.54	4.22	1.88	2.01/1.79	.55/.52
2	KH	33	48Z	9.57	1.54	3.84	1.88	2.01/1.79	.55/.52
1	KH	32	48Z	9.32	1.54	3.59	1.88	2.01/1.79	.55/.52



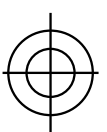
REGAL-BELOIT CORPORATION

TITLE OUTLINE

FORM N- GENERAL PURPOSE MOTOR- DRIP PROOF- SOLID OR RESIL BASE- BALL OR SLEEVE BEARING

FOR ADDITIONAL INFO REFER TO:	MODEL	DETAIL	CHECKED	ENGRG	MFG	QUALITY	ISSUED	MDP
		JPK						
APPLIED PRACTICES	SOLID MODEL: 52A101908							
DIMENSIONS ARE IN INCHES								
MATERIAL								

SCALE: 0.250	REF. No.:	SHEET 1 of 1
SIZE: DRAWING A		
DATE: 01/15/76	DATE: 12/15/05	REV: 8

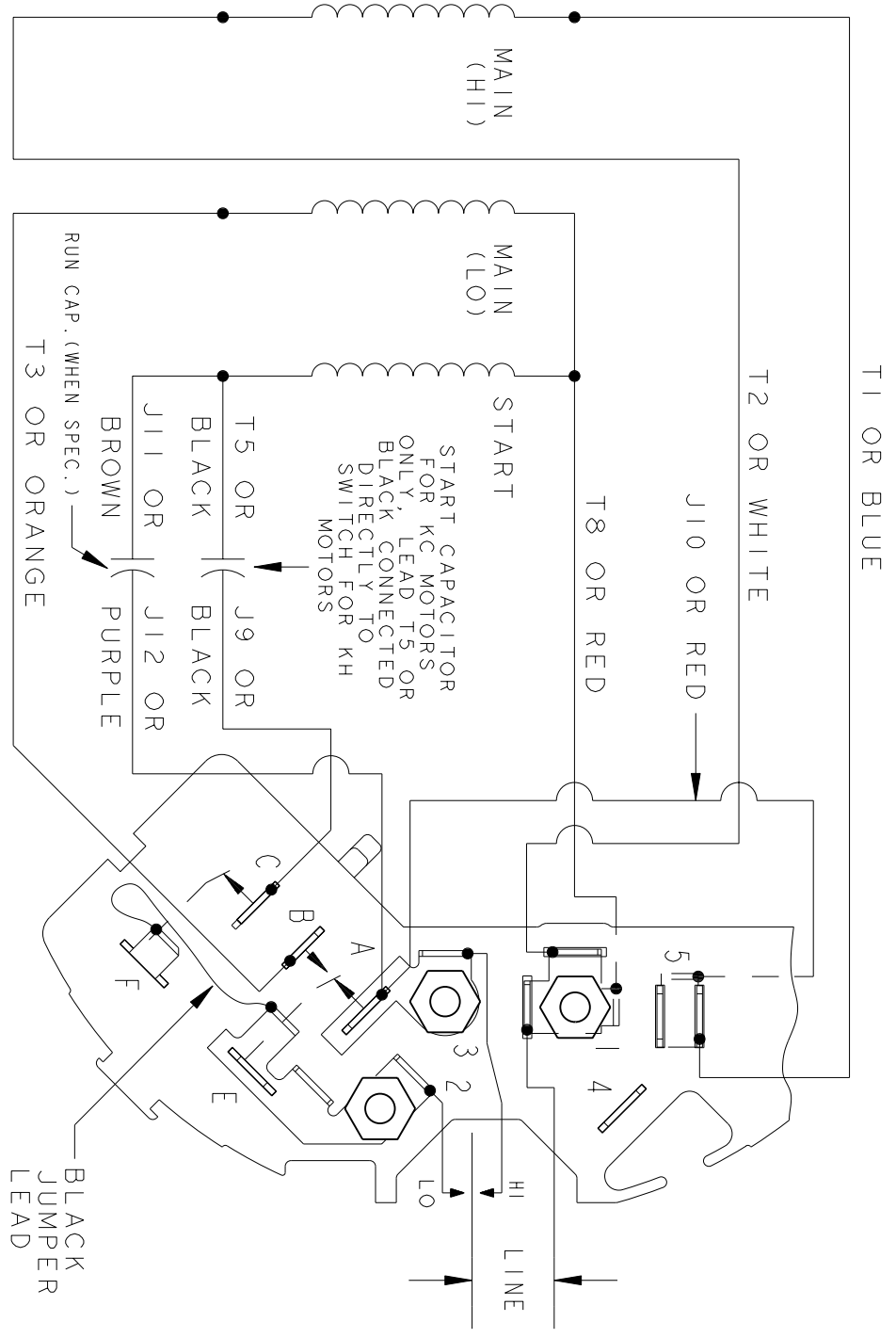


THIRD ANGLE PROJECTION

REVISIONS

REV.	DESCRIPTION	DATE	APPROVED
5	UPDATED TO RBC FORMAT	01/09/06	MAM

EITHER ROTATION
 SINGLE VOLTAGE
 TYPE KC, KCR, OR KH
 2 SPEED
 POLE CHANGING



NOTE #1 - TO REVERSE ROTATION INTERCHANGE BLUE (T1) AND WHITE (T2) LEADS.

NOTE #2 - WHEN MORE THAN ONE CAPACITOR IS USED CONNECT IN PARALLEL.

REF. DIAG. - 121A865

SWITCH (D) - 115D958BA
 CONNECTION LABEL - 52X332073

SIGNATURES	DATE
MODEL M.D.P.	12/14/87
DETAIL	.
CHECKED	.
ENGRG	.
MFG	.
QUALITY	.
ISSUED	M.D.P. 12/14/87
APPLIED PRACTICES	✓
DIMENSIONS ARE IN INCHES	✓
MATERIAL	SOLID MODEL: 52A106478AA



REGAL-BELOIT CORPORATION

TITLE CONNECTION DIAGRAM

FMF: 5KH36KN114G

52A106478AA

SIZE A	DRAWING	SCALE: 1.000	REF. No.:	SHEET 1 of 1
REV 5				